



# ECONOMIC INDICATORS

NEW SOUTH WALES

EMBARGO: 11:30AM (CANBERRA TIME) FRI 15 JAN 1999

## CONTENTS

	<i>page</i>
Notes . . . . .	2
NSW Overview . . . . .	3
Main features . . . . .	4
List of tables and graphs . . . . .	5
Population . . . . .	6
Labour . . . . .	7
Production . . . . .	10
Building . . . . .	11
Retail trade . . . . .	12
New motor vehicle registrations . . . . .	13
Tourism . . . . .	14
Consumer and producer price indexes . . . . .	15
Finance . . . . .	16
State Government finance . . . . .	17
Investment . . . . .	18
International trade . . . . .	19

- For more information about these and related statistics, contact Bill Markham on (02) 9268 4376 or e-mail [bill.markham@abs.gov.au](mailto:bill.markham@abs.gov.au) or refer to the back cover of this publication.

# NOTES

**GENERAL**

This publication provides information on a wide range of economic indicators which are the latest available at the time of publication. In a number of cases, figures appearing in this summary are preliminary and are subject to revision in subsequent issues.

**SEASONAL  
ADJUSTMENT  
AND TREND  
ESTIMATION**

Seasonal adjustment is a means of removing the estimated effects of normal seasonal variation from a series so that the effects of other variations on that series can be more clearly recognised. Seasonal adjustment does not aim to remove the irregular or non-seasonal influences which may be present. This means that movements of seasonally adjusted estimates may not be reliable indicators of trend behaviour. Smoothing seasonally adjusted series produces a measure of the underlying trend by reducing the impact of the irregular component of the series. This smoothing technique does result in revisions to the most recent estimates as additional observations become available. For an explanation of seasonal adjustment derivation, refer to the publication *Seasonally Adjusted Indicators* (Cat. no. 1308.0).

**STANDARD ERRORS  
OF ESTIMATES**

One measure of the variability which occurs as a result of surveying only samples of the total business population is the standard error. There are about two chances in three that a survey estimate is within one standard error of the figure that would have been obtained if all businesses had been included, and about 19 chances in 20 that it is within two standard errors. The standard error can also be expressed as a percentage of the estimate and this is known as the relative standard error (RSE). For detailed explanatory notes and definitions for the items shown in this publication, readers are referred to the specific ABS publications.

Current publications produced by the ABS are listed in the *Catalogue of Publications* (Cat. no. 1101.0). A *Release Advice* (Cat. no. 1105.0) is issued on Tuesdays and Fridays which lists publications to be released in the next few days. These publications are available from any ABS office.

.....

**SYMBOLS AND  
OTHER USAGES**

kWh	kilowatt hour
teraJ	terajoule
n.a.	not available
n.p.	not available for publication but included in totals where applicable
n.y.a	not yet available
r	figure or series revised since previous issue
..	not applicable
—	nil or rounded to zero
—	break in continuity of series (where a line is drawn across a column between two consecutive figures)

Bernard Wong  
Acting Regional Director  
New South Wales

.....

# NSW OVERVIEW

---

## EMPLOYMENT

Employment fell by 1.7% in NSW in November 1998 to a seasonally adjusted figure of 2,851,500. National employment fell by 0.6% over the month.

## UNEMPLOYMENT

Unemployment in NSW rose by 15.8% in November 1998 to a seasonally adjusted figure of 241,700. This followed a fall of 9.0% in the previous month. The NSW seasonally adjusted unemployment rate fell from 7.3% in September 1998 to 6.7% in October before rising sharply to 7.8% in November. (It should be noted that the trend unemployment rate remained steady over this period.) The national unemployment rate fell from a seasonally adjusted 8.1% in September to 7.7% in October before rising to 8.0% in November.

## BUILDING APPROVALS

The seasonally adjusted number of new dwelling units approved for NSW in October 1998 increased by 7.3% from the previous month to 4,138.

## RETAIL

In seasonally adjusted terms, total retail sales for NSW in October 1998 was \$4,043.1 million. The figure for September 1998 was \$4,019.1 million.

## NEW MOTOR VEHICLE REGISTRATIONS

New motor vehicle registrations for NSW in seasonally adjusted terms in October 1998 fell by 5.6% from the previous month to 22,274.

## INVESTMENT

The September quarter 1998 trend estimate of total private new capital expenditure (at current prices) for NSW was \$3,797 million, an increase of 0.6 % from the previous quarter.

## FINANCE

The seasonally adjusted value of housing finance commitments for owner occupation in NSW in October 1998 was \$1,905 million. This represented an increase of 8.5% on the previous month and an increase of 2.6% since October 1997.

## MAIN FEATURES

---

### INVESTMENT

For total private new capital expenditure (at current prices) the September quarter 1998 trend estimate for NSW was \$3,797 million. This represented an increase of \$24 million or 0.6% from the previous quarter, compared with an increase of 1.7% for Australia over the same period.

The trend estimates for expenditure on buildings and structures for NSW rose by 2.2% to \$1,151 million. This expenditure has been steadily increasing over the past four quarters and is 14.5% higher than in the September quarter 1997. The trend estimates for expenditure on equipment, plant and machinery for NSW fell slightly, by \$2 million (0.1%) to \$2,646 million. This level of expenditure is 5.4% higher than in the September quarter 1997.

### FINANCE

The seasonally adjusted estimate for the value of housing finance commitments in NSW was \$1,905 million in October 1998, a rise of 8.5% from September 1998. This figure increased by 2.6% over the year from \$1,855 million in October 1997.

In original terms, there was an overall 0.5% increase in total commitments for NSW in October 1998. This was due to a 5.3% increase to \$1,220 million in commitments to purchase established dwellings. All other indicators were in decline for October 1998. Commitments for the construction of dwellings fell by 8.6% to \$221 million, commitments for the purchase of newly erected dwellings fell by 9.4% to \$95 million and commitments for refinancing fell by 6.4% to \$305 million.

Compared to the housing finance figures of October 1997, all components fell over the period, with the exception of commitments to refinancing which rose 0.8%. Commitments for the construction of dwellings fell by 1.1%, commitments for the purchase of newly erected dwellings fell by 14.6% and commitments for the purchase of established dwellings fell by 2.7%.

The average borrowing size in NSW in October 1998 was \$150,900. This was up by 8.4% from the average of \$139,200 recorded for October 1997.

# LIST OF TABLES AND GRAPHS

Page

## POPULATION

- 1** Estimated resident population, NSW . . . . . 6

## LABOUR

- 2** Labour data, latest time period, NSW and Australia . . . . . 7  
**3** Labour data, time series, NSW . . . . . 7  
**4** Labour force status of the civilian population, NSW . . . . . 8  
**5** Graph: Unemployment rates, NSW and Australia . . . . . 9

## PRODUCTION

- 6** Coal, electricity and gas production, latest time period, NSW and Australia . . 10  
**7** Coal, electricity and gas production, time series, NSW . . . . . 10

## BUILDING

- 8** Building approvals, latest time period, NSW and Australia . . . . . 11  
**9** Building approvals, time series, NSW . . . . . 11

## RETAIL TRADE

- 10** Turnover of retail establishments, latest time period, NSW and Australia . . . 12  
**11** Turnover of retail establishments, time series, NSW . . . . . 12

## NEW MOTOR VEHICLE REGISTRATIONS

- 12** New motor vehicle registrations, latest time period, NSW and Australia . . . . 13  
**13** New motor vehicle registrations, time series, NSW . . . . . 13

## TOURISM

- 14** Accommodation Establishments, latest time period, NSW and Australia. . . . . 14  
**15** Accommodation Establishments, time series, Sydney and NSW. . . . . 14  
**16** Graph: Hotels, motels etc., monthly room occupancy rates,  
 Sydney Tourism Region and NSW. . . . . 14

## CONSUMER AND PRODUCER PRICE INDEXES

- 17** Consumer and producer price indexes, latest time period,  
 NSW and Australia . . . . . 15  
**18** Consumer and producer price indexes, time series, NSW . . . . . 15  
**19** Graph: Consumer Price Index, Sydney and average of 8 capital cities . . . . . 15

## HOUSING FINANCE

- 20** Finance commitments, latest time period, NSW and Australia . . . . . 16  
**21** Finance commitments, time series, NSW . . . . . 16

## STATE GOVERNMENT FINANCE

- 22** Government finance, general government sector, time series, NSW. . . . . 17

## INVESTMENT

- 23** Actual private new fixed capital expenditure, latest time period,  
 NSW and Australia . . . . . 18  
**24** Actual private new fixed capital expenditure, time series, NSW. . . . . 18  
**25** Graph: Actual private new fixed capital expenditure, NSW. . . . . 18

## INTERNATIONAL TRADE

- 26** Imports and exports, latest time period, NSW and Australia . . . . . 19  
**27** Imports and exports, time series, NSW . . . . . 19

# 1

## ESTIMATED RESIDENT POPULATION, NSW

Period	Estimated resident population at end of period			Increase during period			Mean estimated resident population for year ended	
	Males	Females	Persons	Natural increase(a)	Net estimated migration	Total increase(b)	30 June	31 December
	'000	'000	'000	'000	'000	'000	'000	'000
<b>1995</b>	3 064.0	3 104.8	6 168.8	42.0	33.7	r75.7	6 093.2	6 128.0
<b>1996</b>	r3 098.9	r3 143.1	r6 241.9	r41.8	r31.3	r73.1	6 167.2	6 204.2
<b>1997</b>	r3 129.9	r3 172.6	r6 302.5	r41.2	19.3	r60.6	6 240.9	6 276.1
<b>1997</b>								
March qtr r	3 108.8	3 152.4	6 261.2	11.0	8.3	19.3	..	..
June qtr r	3 114.7	3 158.1	6 272.8	10.7	0.9	11.5	..	..
September qtr	r3 123.3	r3 165.9	r6 289.2	7.6	r8.8	r16.4	..	..
December qtr	r3 129.9	r3 172.6	r6 302.5	11.9	r1.3	r13.2	..	..
<b>1998</b>								
March qtr	r3 143.1	r3 184.3	r6 327.4	9.9	r15.0	r24.9	..	..
June qtr	3 150.5	3 191.1	6 341.6	10.2	4.0	14.2	..	..

<sup>a</sup> Excess of live births over deaths.

<sup>b</sup> For dates prior to June 1996, differences between the total increase shown and the sum of the natural increase and net estimated migration arise from retrospective adjustments to population estimates (which are made after each Census) to compensate for any intercensal discrepancy. A description of intercensal discrepancy is contained in the ABS information paper Demographic Estimates: Concepts, Sources and Methods (Cat. no. 3228.0).

Source: Australian Demographic Statistics (Cat. no. 3101.0)

## 2

### LABOUR, NSW AND AUSTRALIA

Indicator	Unit	Latest period	New South Wales		Australia			
			Latest figure	Change from prior period %	Change from same period prior year %	Latest figure	Change from prior period %	Change from same period prior year %
Employed persons (seasonally adjusted)	'000	Nov 98	2 851.5	-1.7	0.7	8 637.9	-0.6	1.5
Unemployed persons (seasonally adjusted)	'000	Nov 98	241.7	15.8	1.3	750.8	4.3	-3.6
Labour force (seasonally adjusted)	'000	Nov 98	3 093.2	-0.5	0.7	9 388.7	-0.2	1.1
Participation rate (seasonally adjusted)	%	Nov 98	61.6	-0.6	-0.5	63.2	-0.3	-0.3
Unemployment rate (seasonally adjusted)	%	Nov 98	7.8	16.4	0.0	8.0	3.9	-4.8
Industrial disputes—working days lost	'000	Aug 98	20.0	127.3	-9.5	54.9	167.8	68.9
Job vacancies	'000	Aug 98	26.4	28.8	36.7	73.0	-0.3	5.4
Average weekly employee earnings—full-time adult ordinary time earnings (seasonally adjusted)	\$	Aug 98	760.9	1.8	4.0	738.4	1.8	4.2

Source: Labour Force, Australia, Preliminary (Cat. no. 6202.0), Job Vacancies and Overtime, Australia (Cat. no. 6354.0), Industrial Disputes, Australia (Cat. no. 6321.0), Average Weekly Earnings, States and Australia (Cat. no. 6302.0)

## 3

### LABOUR, NSW

Period	Seasonally adjusted						
	Employed persons '000	Unemployed persons '000	Labour force '000	Participation rate %	Unemployment rate %	Industrial disputes (working days lost) '000	Job vacancies '000
<b>1997</b>							
September	2 815.2	240.2	3 055.5	61.7	7.9	23.0	..
October	2 787.7	244.1	3 031.7	61.2	8.1	28.0	..
November	2 831.9	238.7	3 070.6	61.9	7.8	8.1	22.8
December	2 836.6	228.0	3 064.7	61.7	7.4	4.8	..
<b>1998</b>							
January	2 843.3	227.1	3 070.4	61.8	7.4	3.3	..
February	2 805.4	234.5	3 039.9	61.1	7.7	9.3	23.5
March	2 830.3	230.7	3 061.0	61.5	7.5	19.7	..
April	2 850.4	220.5	3 070.9	61.6	7.2	8.1	..
May	2 835.4	231.9	3 067.3	61.5	7.6	28.1	20.5
June	2 864.6	234.3	3 098.9	62.1	7.6	32.1	..
July	2 886.7	232.9	3 119.6	62.4	7.5	8.8	..
August	2 839.2	235.1	3 074.3	61.5	7.6	20.0	26.4
September	2 892.6	229.4	3 122.0	62.3	7.3	n.y.a.	..
October	2 899.7	208.7	3 108.4	62.0	6.7	n.y.a.	..
November	2 851.5	241.7	3 093.2	61.6	7.8	n.y.a.	n.y.a.

Source: Labour Force, Australia, Preliminary (Cat. no. 6202.0), Industrial Disputes, Australia (Cat. no. 6321.0), Job Vacancies and Overtime, Australia (Cat. no. 6354.0)

## 4

## LABOUR FORCE STATUS, NSW—ORIGINAL

Month	Employed		Unemployed		Labour force	Not in labour force	Civilian population aged 15 years and over	Unemployment rate(a)	Participation rate(b)
	Full-time workers	Total	Looking for full-time work	Total					
	'000	'000	'000	'000	'000	'000	'000	%	%
MALES									
<b>November</b>									
1994	1 369.3	1 534.2	129.0	143.6	1 677.8	661.3	2 339.1	8.6	71.7
1995	1 408.5	1 591.4	121.2	134.5	1 725.9	642.7	2 368.7	7.8	72.9
1996	1 416.6	1 589.1	117.7	134.0	1 723.1	681.4	2 404.6	7.8	71.7
<b>1997</b>									
September	1 434.3	1 613.3	126.1	147.6	1 760.9	668.5	2 429.3	8.4	72.5
October	1 428.1	1 595.3	121.3	138.9	1 734.2	698.1	2 432.3	8.0	71.3
November	1 431.3	1 615.2	119.0	138.1	1 753.3	681.9	2 435.2	7.9	72.0
December	1 456.8	1 637.6	116.8	135.1	1 772.7	665.4	2 438.1	7.6	72.7
<b>1998</b>									
January	1 441.8	1 616.3	127.1	141.7	1 758.0	682.3	2 440.3	8.1	72.0
February	1 431.8	1 599.2	129.3	150.7	1 749.9	692.5	2 442.4	8.6	71.6
March	1 432.2	1 613.1	123.5	140.6	1 753.7	690.9	2 444.6	8.0	71.7
April	1 441.4	1 622.7	104.7	122.9	1 745.6	701.8	2 447.3	7.0	71.3
May	1 434.0	1 614.6	115.7	133.2	1 747.8	702.3	2 450.1	7.6	71.3
June	1 443.0	1 623.9	117.7	134.6	1 758.5	694.4	2 452.9	7.7	71.7
July	1 463.8	1 639.4	115.6	128.2	1 767.6	687.9	2 455.5	7.3	72.0
August	1 422.9	1 597.4	116.8	136.1	1 733.5	724.5	2 458.1	7.9	70.5
September	1 464.5	1 646.5	118.1	135.3	1 781.8	678.8	2 460.6	7.6	72.4
October	1 459.3	1 647.0	97.6	111.3	1 758.3	706.0	2 464.4	6.3	71.3
November	1 440.7	1 631.9	113.3	130.6	1 762.5	705.6	2 468.1	7.4	71.4
FEMALES									
<b>November</b>									
1994	695.0	1 150.7	66.7	98.5	1 249.2	1 175.1	2 424.3	7.9	51.5
1995	735.0	1 220.3	65.0	94.0	1 314.3	1 137.6	2 451.9	7.2	53.6
1996	730.9	1 214.6	50.2	82.2	1 296.8	1 195.9	2 492.6	6.3	52.0
<b>1997</b>									
September	722.2	1 226.8	63.4	96.1	1 322.9	1 196.5	2 519.4	7.3	52.5
October	721.0	1 194.1	68.1	97.3	1 291.5	1 230.6	2 522.1	7.5	51.2
November	725.5	1 228.3	62.1	87.8	1 316.1	1 208.6	2 524.7	6.7	52.1
December	730.8	1 234.9	66.3	95.7	1 330.6	1 196.8	2 527.4	7.2	52.6
<b>1998</b>									
January	721.4	1 185.5	71.4	102.6	1 288.1	1 241.2	2 529.3	8.0	50.9
February	707.1	1 189.9	72.1	111.7	1 301.7	1 229.5	2 531.1	8.6	51.4
March	715.8	1 217.8	73.7	105.3	1 323.1	1 209.9	2 533.0	8.0	52.2
April	720.0	1 226.2	63.2	96.2	1 322.4	1 212.9	2 535.3	7.3	52.2
May	707.9	1 220.7	68.5	94.0	1 314.7	1 222.9	2 537.7	7.1	51.8
June	727.3	1 242.0	57.2	88.3	1 330.4	1 209.6	2 540.0	6.6	52.4
July	762.9	1 255.2	59.9	88.7	1 344.0	1 198.3	2 542.3	6.6	52.9
August	721.7	1 216.6	62.7	85.2	1 301.9	1 242.7	2 544.5	6.5	51.2
September	753.6	1 271.8	62.0	97.4	1 369.2	1 177.6	2 546.8	7.1	53.8
October	747.7	1 254.4	55.5	91.0	1 345.4	1 204.8	2 550.1	6.8	52.8
November	730.1	1 231.6	61.6	97.8	1 329.4	1 224.0	2 553.4	7.4	52.1

For footnotes see end of table.



# 4

## LABOUR FORCE STATUS, NSW—ORIGINAL *continued*

Month	Employed		Unemployed		Labour force	Not in labour force	Civilian population aged 15 years and over	Unemployment rate(a)	Participation rate(b)
	Full-time workers	Total	Looking for full-time work	Total					
	'000	'000	'000	'000	'000	'000	'000	%	%
PERSONS									
<b>November</b>									
1994	2 064.2	2 684.9	195.7	242.0	2 926.9	1 836.4	4 763.4	8.3	61.4
1995	2 143.5	2 811.6	186.2	228.6	3 040.2	1 780.4	4 820.6	7.5	63.1
1996	2 147.5	2 803.7	167.9	216.2	3 019.9	1 877.3	4 897.2	7.2	61.7
<b>1997</b>									
September	2 156.5	2 840.0	189.5	243.7	3 083.8	1 865.0	4 948.7	7.9	62.3
October	2 149.1	2 789.4	189.3	236.2	3 025.7	1 928.7	4 954.3	7.8	61.1
November	2 156.7	2 843.5	181.1	225.9	3 069.4	1 890.5	4 959.9	7.4	61.9
December	2 187.6	2 872.6	183.1	230.8	3 103.3	1 862.2	4 965.6	7.4	62.5
<b>1998</b>									
January	2 163.2	2 801.8	198.5	244.3	3 046.1	1 923.5	4 969.5	8.0	61.3
February	2 138.9	2 789.1	201.4	262.4	3 051.5	1 922.0	4 973.5	8.6	61.4
March	2 148.0	2 830.9	197.1	245.8	3 076.8	1 900.8	4 977.5	8.0	61.8
April	2 161.5	2 848.9	167.9	219.1	3 068.0	1 914.7	4 982.7	7.1	61.6
May	2 141.9	2 835.3	184.2	227.2	3 062.5	1 925.2	4 987.8	7.4	61.4
June	2 170.3	2 865.9	174.9	223.0	3 088.8	1 904.1	4 992.9	7.2	61.9
July	2 226.8	2 894.6	175.5	216.9	3 111.6	1 886.2	4 997.7	7.0	63.3
August	2 144.7	2 814.1	179.5	221.3	3 035.4	1 967.2	5 002.6	7.3	60.7
September	2 218.1	2 918.3	180.3	232.7	3 151.0	1 856.4	5 007.4	7.4	62.9
October	2 207.0	2 901.4	153.1	202.2	3 103.7	1 910.8	5 014.5	6.5	61.9
November	2 170.8	2 863.5	174.9	228.4	3 092.0	1 929.6	5 021.6	7.4	61.6

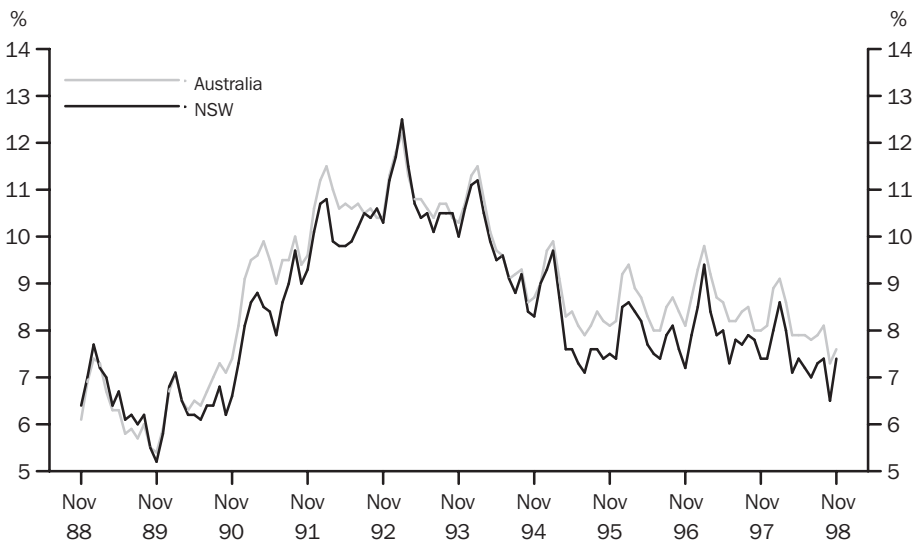
<sup>a</sup> The number of unemployed in each group expressed as a percentage of the labour force in the same group.

<sup>b</sup> The labour force in each group expressed as a percentage of the civilian population aged 15 and over in the same group.

Source: Labour Force, Australia, Preliminary (Cat. no. 6202.0)

# 5

## UNEMPLOYMENT RATE—ORIGINAL



Source: Labour Force, Australia, Preliminary (Cat. no. 6202.0).

## 6

## COAL, ELECTRICITY AND GAS PRODUCTION, NSW AND AUSTRALIA—ORIGINAL

Indicator	Unit	Latest period	New South Wales				Australia		
			Latest figure	Change from prior period		Latest figure	Change from prior period		
				%	Change from same period prior year		%	Change from same period prior year	
Raw coal won—									
Underground	'000 tonnes	Aug 98	4 945	31.7	0.7	6 321	25.5	-1.9	
Open cut	'000 tonnes	Aug 98	6 559	16.8	13.2	14 357	4.4	2.0	
Total	'000 tonnes	Aug 98	11 504	22.7	7.5	20 678	10.1	0.8	
Electricity	mill. kWh	Sep qtr 98	16 543	6.3	-0.5	46 084	4.1	1.2	
Gas(a)	teraJ	Sep qtr 98	32 258	8.9	-5.4	190 830	9.4	4.1	

<sup>a</sup> Available for issue through mains. Includes ACT.

Source: Joint Coal Board, Manufacturing Production, Australia (Cat. no. 8301.0)

## 7

## COAL, ELECTRICITY AND GAS PRODUCTION, NSW—ORIGINAL

Period	Raw coal won			Electricity mill. kWh	Gas(a) teraJ
	Underground	Open cut	Total		
	'000 tonnes	'000 tonnes	'000 tonnes		
<b>1995-96</b>	54 314	58 775	113 089	62 047	104 141
<b>1996-97</b>	54 643	69 037	123 680	62 788	109 284
<b>1997-98</b>	58 249	75 049	133 298	61 804	111 665
<b>1997</b>					
July	6 491	7 085	13 576	16 632	34 086
August	5 124	6 112	11 236		
September	4 910	5 792	10 702		
October	4 498	6 716	11 215	15 220	25 445
November	4 253	6 083	10 336		
December	4 090	5 997	10 087		
<b>1998</b>					
January	5 292	6 463	11 755	14 390	22 521
February	4 553	5 948	10 501		
March	4 437	5 800	10 237		
April	5 160	7 052	12 212	15 561	29 614
May	4 648	5 851	10 499		
June	4 842	6 811	11 653		
July r	5 178	7 280	12 458	16 543	32 258
August	r3 756	r5 616	r9 371		
September	4 945	6 559	11 504		

<sup>a</sup> Available for issue through mains. Includes ACT.

Source: Joint Coal Board, Manufacturing Production, Australia (Cat. no. 8301.0)

## 8

## BUILDING APPROVALS, NSW AND AUSTRALIA

Indicator	Unit	Latest period	Latest figure	New South Wales		Australia		
				Change from prior period %	Change from same period prior year %	Change from prior period %	Change from same period prior year %	
Number of dwelling units(a) (seasonally adjusted)—								
New houses	No.	Oct 98	2 357	14.4	-3.2	8 557	1.6	-0.7
Total	No.	Oct 98	4 138	7.3	1.5	12 486	2.1	1.2
Value of new residential building (seasonally adjusted)	\$m	Oct 98	468.0	12.5	-2.4	1 386.7	6.2	6.4
Value of alterations and additions to residential building(b) (seasonally adjusted)	\$m	Oct 98	79.2	-18.5	-27.3	230.4	1.7	-1.7
Value of non-residential building(c) (original)	\$m	Oct 98	313.5	-2.9	-39.7	1 123.5	18.4	-9.2
Value of all building (original)	\$m	Oct 98	862.1	-0.6	-23.2	2 753.8	4.9	-2.9

<sup>a</sup> Includes dwelling units approved as part of the construction of non-residential building and alterations and additions to existing buildings (including conversions to dwelling units).

<sup>b</sup> Valued at \$10,000 or more. Includes conversions of existing buildings into residential buildings.

<sup>c</sup> Valued at \$50,000 or more.

Source: Building Approvals, Australia (Cat. no. 8731.0)

## 9

## BUILDING APPROVALS, NSW

Period	Number of dwelling units(a), seasonally adjusted				Value of building approvals			
	New houses		Total		Seasonally adjusted		Original	
	Private sector	Total	Private sector	Total	New residential building	Alterations and additions to residential building(b)	Non-residential building(c)	All building
	no.	no.	no.	no.	\$m	\$m	\$m	\$m
<b>1995-96</b>	..	..	..	..	..	..	3 650.3	9 168.6
<b>1996-97</b>	..	..	..	..	..	..	5 169.2	11 356.6
<b>1997-98</b>	..	..	..	..	..	..	5 894.7	13 287.2
<b>1997</b>								
August	2 198	2 203	4 622	4 742	614.2	99.5	710.5	1 405.9
September	2 181	2 186	3 844	3 961	430.3	93.8	396.4	958.0
October	2 424	2 434	4 045	4 077	479.4	108.9	520.3	1 123.1
November	2 399	2 411	4 424	4 470	503.1	103.5	380.6	1 028.0
December	2 545	2 563	4 476	4 620	529.0	119.0	286.0	885.8
<b>1998</b>								
January	2 621	2 648	4 395	4 506	450.2	144.0	477.0	984.0
February	2 451	2 482	3 635	3 767	413.4	122.5	461.8	943.8
March	2 574	2 592	4 496	4 633	522.9	112.7	386.4	988.9
April	2 578	2 585	4 909	5 025	577.0	160.4	527.0	1 263.2
May	2 405	2 419	r3 970	r4 047	463.7	129.4	r654.7	1 335.0
June	2 483	2 529	r5 145	r5 246	588.9	139.1	r534.3	1 214.8
July	2 289	2 450	4 594	4 920	564.1	142.5	329.9	1 103.2
August	2 000	2 016	3 672	3 776	465.5	91.3	612.0	1 158.0
September r	2 037	2 060	3 773	3 857	416.0	97.2	322.9	867.3
October	2 348	2 357	3 983	4 138	468.0	79.2	313.5	862.1

<sup>a</sup> Includes dwelling units approved as part of the construction of non-residential building and alterations and additions to existing buildings (including conversions to dwelling units).

<sup>b</sup> Valued at \$10,000 or more. Includes conversions of existing buildings into residential buildings.

<sup>c</sup> Valued at \$50,000 or more.

Source: Building Approvals, Australia (Cat. no. 8731.0)

## 10

## TURNOVER OF RETAIL ESTABLISHMENTS(a), NSW AND AUSTRALIA—SEASONALLY ADJUSTED

Indicator	Latest period	New South Wales			Australia		
		Latest figure	Change from prior period	Change from same period prior year	Latest figure	Change from prior period	Change from same period prior year
		\$m	%	%	\$m	%	%
Food retailing	Oct 98	1 553.1	1.5	1.8	4 768.7	0.4	6.0
Department stores	Oct 98	352.2	-1.0	2.6	993.3	-4.5	-0.1
Clothing and soft good retailing	Oct 98	310.5	4.8	13.0	806.5	2.0	11.5
Household good retailing	Oct 98	400.4	-3.8	-4.9	1 255.4	-0.2	-3.2
Recreational good retailing	Oct 98	224.5	1.4	0.7	680.3	1.6	4.4
Other retailing	Oct 98	393.5	-2.9	-0.2	1 184.2	2.7	5.3
Hospitality and services	Oct 98	808.9	1.8	6.1	2 042.8	3.5	9.7
<b>Total value of retail sales</b>	<b>Oct 98</b>	<b>4 043.1</b>	<b>0.6</b>	<b>2.5</b>	<b>11 731.4</b>	<b>0.8</b>	<b>5.2</b>

<sup>a</sup> The figures shown are derived from a monthly survey of retail establishments. Excludes motor vehicle, boat and caravan dealers, service stations, smash repairers, tyre and battery retailers, bread and milk vendors, footwear repairers and electrical appliance repairers n.e.c. Retail establishments which do not have employees are excluded from the survey. Turnover includes retail sales, wholesale sales, takings from repairs, meals and hiring of goods; and commissions from agency activity (e.g. commissions received from collecting dry cleaning, selling lottery tickets etc.)

Source: Retail Trade, Australia (Cat. no. 8501.0)

## 11

## TURNOVER OF RETAIL ESTABLISHMENTS(a), NSW—SEASONALLY ADJUSTED

Period	Food retailing	Department stores	Clothing and soft good retailing	Household good retailing	Recreational good retailing	Other retailing	Hospitality and services	Total
	\$m	\$m	\$m	\$m	\$m	\$m	\$m	\$m
<b>1997</b>								
August	1 506.3	335.5	275.1	436.6	213.5	386.7	755.6	3 909.4
September	1 529.3	349.3	276.9	433.1	225.9	378.7	762.3	3 955.5
October	1 524.9	343.4	274.7	421.2	223.0	394.1	762.4	3 943.6
November	1 524.4	349.4	279.0	402.3	220.3	410.8	766.8	3 952.9
December	1 546.0	331.9	282.0	420.7	226.6	406.8	772.2	3 986.2
<b>1998</b>								
January	1 560.2	367.4	267.4	438.8	234.4	398.3	760.3	4 026.8
February	1 558.1	328.7	266.5	437.4	224.7	407.0	754.4	3 976.9
March	1 547.6	334.2	265.2	444.7	224.0	394.2	760.3	3 970.3
April	1 515.9	354.9	269.6	434.1	229.8	405.0	762.3	3 971.5
May	1 510.2	362.3	286.9	426.9	221.5	407.7	775.4	3 991.0
June	1 532.2	312.4	271.8	422.6	224.5	412.4	775.2	3 951.0
July	1 514.5	395.7	281.4	426.9	219.5	406.0	801.9	4 046.0
August	1 483.1	348.5	286.4	425.6	205.2	397.3	785.4	3 931.4
September	1 530.0	355.6	296.4	416.2	221.5	405.1	794.3	4 019.1
October	1 553.1	352.2	310.5	400.4	224.5	393.5	808.9	4 043.1

<sup>a</sup> The figures shown are derived from a monthly survey of retail establishments. Excludes motor vehicle, boat and caravan dealers, service stations, smash repairers, tyre and battery retailers, bread and milk vendors, footwear repairers and electrical appliance repairers n.e.c. Retail establishments which do not have employees are excluded from the survey. Turnover includes retail sales, wholesale sales, takings from repairs, meals and hiring of goods; and commissions from agency activity (e.g. commissions received from collecting dry cleaning, selling lottery tickets etc.)

Source: Retail Trade, Australia (Cat. no. 8501.0)

# 12

## NEW MOTOR VEHICLE REGISTRATIONS(a), NSW AND AUSTRALIA—SEASONALLY ADJUSTED

Indicator	Latest period	New South Wales			Australia		
		Latest figure	Change from prior period	Change from same period prior year	Latest figure	Change from prior period	Change from same period prior year
		no.	%	%	no.	%	%
Passenger vehicles	Oct 98	18 954	-7.0	0.2	53 103	-5.3	-2.7
Other vehicles (excluding motor cycles)	Oct 98	3 320	3.1	21.7	10 249	-1.8	9.9
Total registrations (excluding motor cycles)	Oct 98	22 274	-5.6	2.9	63 351	-4.8	-0.9

<sup>a</sup> Includes vehicles (other than those of the defence forces) owned by Government departments and authorities. Excludes mobile plant and equipment, tractors, trailers and non-motorised caravans.

Source: *New Motor Vehicle Registrations, Australia, Preliminary (Cat. no. 9301.0)*

# 13

## NEW MOTOR VEHICLE REGISTRATIONS(a), NSW—SEASONALLY ADJUSTED

Period	Passenger vehicles	Other vehicles (excluding motor cycles)	Total (excluding motor cycles)
	no.	no.	no.
<b>1997</b>			
August	16 977	2 732	19 709
September	18 454	2 711	21 165
October	18 920	2 729	21 650
November	18 995	2 513	21 507
December	18 315	3 020	21 335
<b>1998</b>			
January	19 116	2 967	22 083
February	18 501	3 259	21 760
March	17 747	2 978	20 725
April	19 342	3 450	22 791
May	18 640	3 282	21 923
June	20 817	3 203	24 020
July	22 040	3 351	25 391
August	18 250	3 277	21 528
September	20 383	3 219	23 601
October	18 954	3 320	22 274

<sup>a</sup> Includes vehicles (other than those of the defence forces) owned by Government departments and authorities. Excludes mobile plant and equipment, tractors, trailers and non-motorised caravans.

Source: *New Motor Vehicle Registrations, Australia, Preliminary (Cat. no. 9301.0)*

# 14

## ACCOMMODATION ESTABLISHMENTS(a) NSW AND AUSTRALIA—ORIGINAL

Indicator	Unit	Latest period	New South Wales				Australia		
			Latest figure	Change from prior period	%	Change from same period prior year	Latest figure	Change from prior period	Change from same period prior year
Room nights	'000	Sept qtr 98	3 077.3	6.5	3.8	9 639.4	10.5	3.5	
Room occupancy rate	%	Sept qtr 98	57.9	2.8	-1.9	58.7	7.5	-1.5	
Takings	\$'000	Sept qtr 98	342 102	8.0	6.2	998 062	13.3	4.5	

<sup>a</sup> Licensed hotels with facilities, motels and guest houses and serviced apartments with 15 or more rooms or units.

Source: *Tourist Accommodation, Australia (Cat. no. 8635.0)*

# 15

## ACCOMMODATION ESTABLISHMENTS(a) SYDNEY AND NSW—ORIGINAL

Period	Sydney Tourism Region(b)			New South Wales		
	Room nights	Room occupancy rate	Takings	Room nights	Room occupancy rate	Takings
	'000	%	\$'000	'000	%	\$'000
<b>1997</b>						
June qtr	1 515.1	70.5	209 163	2 810.3	57.5	303 313
September qtr	1 555.0	69.6	209 484	2 964.9	59.0	322 065
December qtr	1 653.5	73.0	235 244	3 081.0	60.8	343 650
<b>1998</b>						
March qtr	1 664.9	71.9	235 516	3 017.3	59.8	343 248
June qtr	1 568.3	66.3	216 500	2 890.3	56.3	316 721
September qtr	1 640.0	66.1	222 944	3 077.3	57.9	342 102

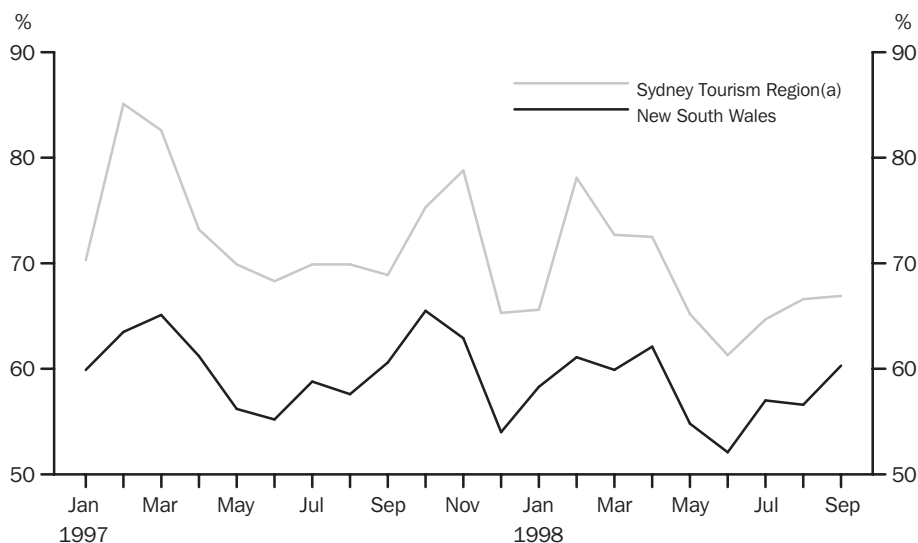
<sup>a</sup> Licensed hotels with facilities, motels and guest houses and serviced apartments with 15 or more rooms or units.

<sup>b</sup> Excludes Gosford, Wyong and Blue Mountains Statistical Local Areas.

Source: *Tourist Accommodation, Small Area Data, NSW (Prod. no. 8635.1.40.001)*

# 16

## ACCOMMODATION ESTABLISHMENTS MONTHLY ROOM OCCUPANCY RATE—ORIGINAL



(a) Excludes Gosford, Wyong and Blue Mountains Statistical Local Areas.

Source: *Tourist Accommodation, Small Area Data, NSW (Prod. no. 8635.1.40.001)*

# 17

## CONSUMER AND PRODUCER PRICE INDEXES, NSW AND AUSTRALIA

Indicator	Unit	Latest period	Latest figure	New South Wales		Australia(a)		
				Change from prior period %	Change from same period prior year %	Latest figure	Change from prior period %	Change from same period prior year %
Consumer Price Index (all groups)	1989-90 =100.0	Sep qtr 98	121.9	0.4	1.8	121.3	0.2	1.3
Price index of materials used in house building (all groups)	1989-90 =100.0	Sep qtr 98	120.8	0.1	2.5	119.4	0.3	1.8
Price index of materials used in building other than house building (all groups)	1989-90 =100.0	Sep qtr 98	115.0	0.2	0.7	114.8	0.3	0.7

<sup>a</sup> For the Consumer Price Index this is the weighted average of eight capital cities and for the other two indexes, the weighted average of the six State capital cities.

Source: Consumer Price Index (Cat. no. 6401.0), Price Index of Materials Used in Building Other Than House Building, Six State Capital Cities (Cat. no. 6407.0), Price Index of Materials Used in House Building, Six State Capital Cities (Cat. no. 6408.0)

# 18

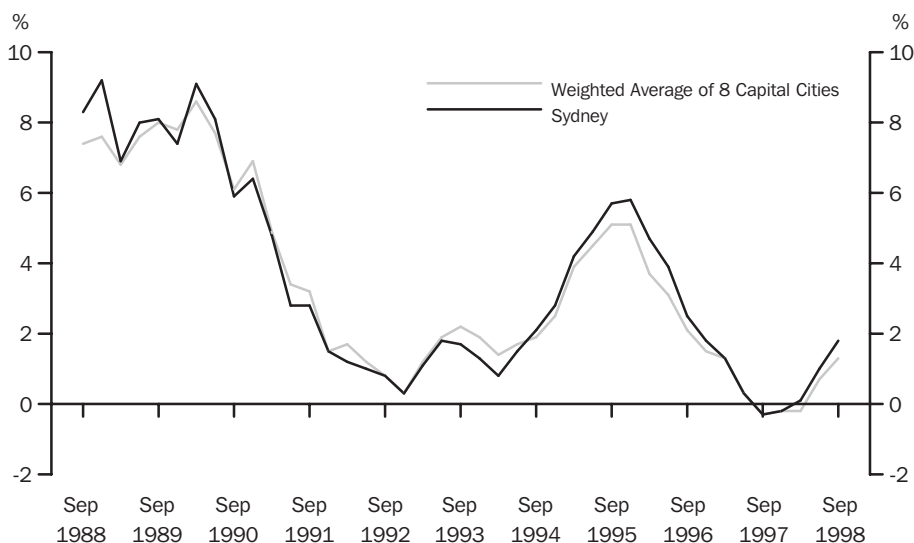
## CONSUMER AND PRODUCER PRICE INDEXES, NSW

Period	Consumer Price Index, all groups	Price Index of materials used in house building, all groups	Price Index of materials used in building other than house building, all groups
	1989-90 = 100.0	1989-90 = 100.0	1989-90 = 100.0
<b>1997</b>			
June qtr	120.2	117.3	113.9
September qtr	119.8	117.8	114.2
December qtr	120.1	119.4	114.2
<b>1998</b>			
March qtr	120.7	120.8	114.4
June qtr	121.4	120.7	114.8
September qtr	121.9	120.8	115.0

Source: Consumer Price Index (Cat. no. 6401.0), Price Index of Materials Used in Building Other Than House Building, Six State Capital Cities (Cat. no. 6407.0), Price Index of Materials Used in House Building, Six State Capital Cities (Cat. no. 6408.0)

# 19

## CONSUMER PRICE INDEX, ANNUAL RATE OF CHANGE



Source: Consumer Price Index (Cat. no. 6401.0)

Indicator	Latest period	New South Wales			Australia		
		Latest figure \$m	Change from prior period %	Change from same period prior year %	Latest figure \$m	Change from prior period %	Change from same period prior year %
Lending commitments for the construction or purchase of dwellings—							
Construction of dwellings	Oct 98	221	-8.6	-1.1	721	-4.6	-0.3
Purchase of newly erected dwellings	Oct 98	95	-9.4	-14.6	230	-1.9	-12.5
Purchase of established dwellings(a)	Oct 98	1 220	5.3	-2.7	2 905	4.5	-1.5
Refinancing of existing dwellings	Oct 98	305	-6.4	0.8	720	-3.3	-12.1
Lending commitments for alterations and additions	Oct 98	85	-1.1	-22.5	216	6.3	-18.5
Total lending commitments to individuals for housing(b)	Oct 98	1 841	0.5	-2.6	4 577	1.4	-3.8
Total lending commitments to individuals for housing (seasonally adjusted)(b)	Oct 98	1 905	8.5	2.6	4 581	3.7	0.7

<sup>a</sup> Excludes refinancing.

<sup>b</sup> Excludes alterations and additions.

Source: *Housing Finance for Owner Occupation, Australia (Cat. no. 5609.0)*

Period	Lending commitments for the construction or purchase of dwellings				Lending commitments for alterations and additions \$m	Total lending commitments to individuals for housing(b)	
	Construction of dwellings \$m	Purchase of newly erected dwellings \$m	Purchase of established dwellings(a) \$m	Refinancing of existing dwellings \$m		Original \$m	Seasonally adjusted \$m
<b>1995-96</b>	1 895	898	10 145	2 930	1 262	15 868	..
<b>1996-97</b>	2 117	1 234	12 566	4 062	1 221	19 979	..
<b>1997-98</b>	2 625	1 280	14 445	3 573	1 174	21 973	..
<b>1997</b>							
August	214	115	1 155	311	90	1 794	r1826
September	236	116	1 210	322	103	1 885	r1857
October	224	111	1 253	302	110	1 891	r1855
November	201	110	1 198	262	98	1 771	r1813
December	204	112	1 137	247	91	1 700	r1796
<b>1998</b>							
January	169	73	919	238	81	1 398	r1860
February	216	98	1 137	298	105	1 750	r1804
March	239	112	1 290	314	107	1 955	r1778
April	223	107	1 305	285	95	1 920	r1885
May	216	95	1 261	312	99	1 885	r1818
June	262	116	1 360	359	102	2 097	r2037
July	263	123	1 284	376	97	2 045	r1827
August	224	93	1 171	307	85	1 796	r1796
September	242	r105	r1158	r326	r86	r1831	r1755
October	221	95	1 220	305	85	1 841	1 905

<sup>a</sup> Excludes refinancing.

<sup>b</sup> Excludes alterations and additions.

Source: *Housing Finance for Owner Occupation, Australia (Cat. no. 5609.0)*



	<i>Actual</i>	<i>Estimates</i>
	<i>3 months ended</i> <i>30 September 1998</i>	<i>12 months ended</i> <i>30 June 1999</i>
	\$m	\$m
<b>Current receipts—</b>		
Stamp duties	965	3 459
Payroll tax	869	3 621
Land tax	74	945
Motor vehicle taxes	272	1 002
Gaming and betting	328	1 440
Commonwealth safety net taxes	467	1 873
Other taxes	266	1 095
Commonwealth general purpose grants	1 205	4 731
Commonwealth specific purpose grants	808	3 230
Dividends/tax equivalents	425	1 251
Other current receipts	261	1 202
<i>Total current receipts</i>	<i>5 940</i>	<i>23 849</i>
<b>Current payments—</b>		
Interest payments	265	1 276
Superannuation	360	1 462
Subsidies to non-budget sector—		
Redundancies	18	77
Services	250	798
Departmental payments—		
Redundancies	23	53
Health	1 394	5 706
Education	1 368	5 364
Law and order	441	1 733
Community services	302	1 217
Other	1 398	5 693
Treasurer's advances	..	125
Less user charges	-586	-2 014
<i>Total current outlays</i>	<i>5 233</i>	<i>21 490</i>
<b>Current result surplus/deficit(-)</b>	<b>707</b>	<b>2 359</b>
<b>Capital receipts—</b>		
Commonwealth specific purpose grants	243	788
Other capital receipts	1	10
<i>Total capital receipts</i>	<i>244</i>	<i>798</i>
<b>Capital outlays—</b>		
Gross fixed capital payments	559	2 841
Capital grants	148	1 016
Less asset sales	-199	-745
<i>Total capital outlays</i>	<i>508</i>	<i>3 112</i>
<b>Capital result surplus/deficit(-)</b>	<b>-264</b>	<b>-2 314</b>
<b>Government Finance Statistics result surplus/deficit(-)</b>	<b>443</b>	<b>45</b>

<sup>a</sup> Includes Department of Training and Education Co-ordination, Department of School Education, Office of the Board of Studies and TAFE.

<sup>b</sup> Includes Attorney Generals Department, Department of Corrective Services and Police Services.

<sup>c</sup> Expenditure from the Treasurer's Advance is included in the relevant current payments figures.

Source: Financial Statement released by NSW Treasury. Figures may differ from data published in annual ABS publications.

# 23

## ACTUAL PRIVATE NEW FIXED CAPITAL EXPENDITURE, CURRENT PRICES—NSW AND AUSTRALIA, TREND

Indicator	Latest period	New South Wales			Australia		
		Latest figure	Change from prior period	Change from same period prior year	Latest figure	Change from prior period	Change from same period prior year
		\$m	%	%	\$m	%	%
Type of asset—							
New buildings and structures	Sept qtr	1 151	2.2	14.5	3 752	4.7	16.3
Equipment, plant and machinery	Sept qtr	2 646	-0.1	5.4	8 451	0.5	4.4
<b>Total</b>	<b>Sept qtr</b>	<b>3 797</b>	<b>0.6</b>	<b>8.0</b>	<b>12 203</b>	<b>1.7</b>	<b>7.8</b>

Source: State Estimates of Private New Capital Expenditure (Cat. no. 5646.0)

# 24

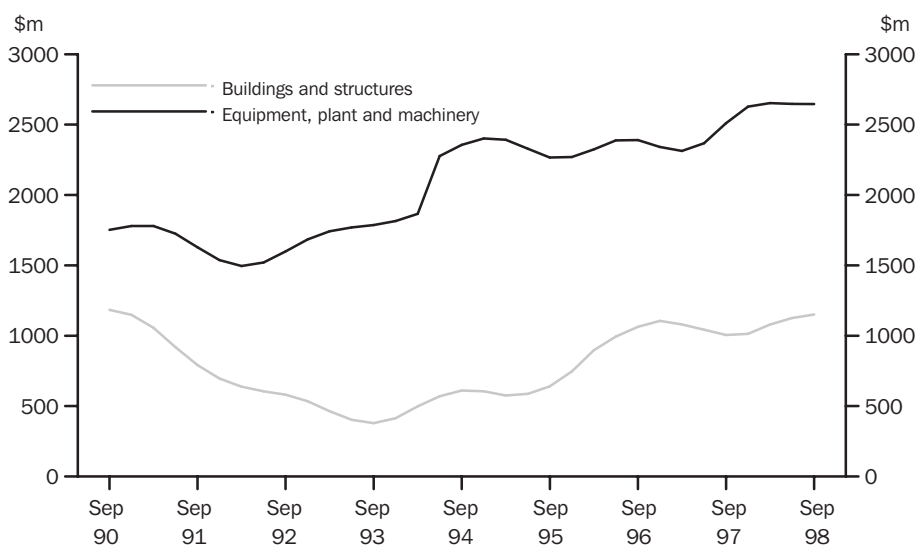
## ACTUAL PRIVATE NEW FIXED CAPITAL EXPENDITURE, CURRENT PRICES—NSW, TREND

Period	Type of asset		
	New buildings and structures	Equipment, plant and machinery	Total
	\$m	\$m	\$m
<b>1997</b>			
June qtr r	1 043	2 368	3 412
September qtr r	1 005	2 510	3 515
December qtr r	1 013	2 628	3 641
<b>1998</b>			
March qtr r	1 079	2 653	3 732
June qtr r	1 126	2 648	3 773
September qtr	1 151	2 646	3 797

Source: State Estimates of New Capital Expenditure (Cat. no. 5646.0)

# 25

## ACTUAL PRIVATE NEW FIXED CAPITAL EXPENDITURE, CURRENT PRICES—NSW, TREND



Source: State Estimates of New Capital Expenditure (5646.0)

Item	Latest period	New South Wales			Australia		
		Latest figure \$m	Change from prior period %	Change from same period prior year %	Latest figure \$m	Change from prior period %	Change from same period prior year %
Overseas imports into NSW	Oct 98	3 687	3.7	8.8	9 022	5.4	13.6
Total overseas exports(c)	Oct 98	1 509	-7.3	-10.9	7 454	3.4	2.9
Export commodities and SITC(d) code—							
Meat and meat preparations (01)	Oct 98	76	-13.7	-2.7	345	-3.0	0.4
Cereals and cereal preparations (04)	Oct 98	58	-50.7	-39.0	302	-30.8	-21.6
Wool and other animal hair (268)	Oct 98	71	21.7	-40.4	231	2.2	-39.2
Coal, coke and briquettes (32)	Oct 98	356	8.6	17.8	823	-7.5	10.5
Iron and steel (67)	Oct 98	67	-29.7	-45.6	116	-18.0	-30.0
Aluminium (684)	Oct 98	105	-5.3	6.9	273	-8.8	15.5
Office machines and automatic data processing machines (75)	Oct 98	27	-15.9	-39.4	53	-19.8	-25.9

<sup>a</sup> Figures shown are Customs value.

<sup>b</sup> Figures shown are Free On Board (FOB) values.

<sup>c</sup> Excludes re-exported goods.

<sup>d</sup> Standard International Trade Classification Revision 3.

Source: International Trade database

Period	Overseas exports of SITC(d) commodities								
	Overseas imports into NSW \$m	Total overseas exports(c) \$m	Meat and meat preparations (01) \$m	Cereals and cereal preparations (04) \$m	Wool and other animal hair (268) \$m	Coal, coke and briquettes (32) \$m	Iron and steel (67) \$m	Aluminium (684) \$m	Office machines and automatic data processing machines (75) \$m
<b>1995-96</b>	34 917	16 684	794	822	720	3 338	1 037	1 111	638
<b>1996-97</b>	34 229	17 730	784	1 540	859	3 426	968	993	535
<b>1997-98</b>	38 485	r19 676	922	1 552	1 061	4 048	1 168	1 226	522
<b>1997</b>									
August	3 005	1 760	71	186	79	318	93	116	44
September	3 220	1 669	76	159	102	351	59	73	48
October	3 388	1 694	78	95	120	302	123	98	45
November	3 098	r1 762	89	149	130	328	98	102	51
December	3 422	1 839	88	165	116	384	89	99	59
<b>1998</b>									
January	2 945	1 436	65	135	72	359	115	118	37
February	2 804	1 459	75	115	82	322	87	82	38
March	3 439	1 502	82	119	73	301	99	107	38
April	3 070	1 481	64	100	66	337	104	100	37
May	3 275	r1 672	82	97	67	346	118	109	38
June	3 596	r1 643	79	86	49	366	118	126	42
July	3 769	r1 609	79	96	65	342	112	104	41
August	3 475	r1 600	69	87	43	r356	92	99	r32
September	3 554	r1 629	r88	r118	59	r328	95	r111	r33
October	3 687	1 509	76	58	71	356	67	105	27

<sup>a</sup> Figures shown are Customs value.

<sup>b</sup> Figures shown are Free On Board (FOB) values.

<sup>c</sup> Excludes re-exported goods.

<sup>d</sup> Standard International Trade Classification Revision 3.

Source: International Trade database

## SELF-HELP ACCESS TO STATISTICS

*PHONE* Call 1900 986 400 for the latest statistics on CPI, Labour Force, Earnings, National Accounts, Balance of Payments and other topics. (Call cost is 75c per minute)

*INTERNET* <http://www.abs.gov.au>

*LIBRARY* A range of ABS publications is available from public and tertiary libraries Australia wide. Contact your nearest library to determine whether it has the ABS statistics you require.

## WHY NOT SUBSCRIBE?

*PHONE* +61 1300 366 323

*FAX* +61 3 9615 7848

## CONTACTING THE ABS

ABS provides a range of services, including: a telephone inquiry service; information consultancy tailored to your needs; survey, sample and questionnaire design; survey evaluation and methodological reviews; and statistical training.

<i>INQUIRIES</i>	<i>By phone</i>	<i>By fax</i>
Canberra	02 6252 6627	02 6253 1404
Sydney	02 9268 4611	02 9268 4668
Melbourne	03 9615 7755	03 9615 7798
Brisbane	07 3222 6351	07 3222 8283
Perth	08 9360 5140	08 9360 5955
Adelaide	08 8237 7400	08 8237 7566
Hobart	03 6222 5800	03 6222 5995
Darwin	08 8943 2111	08 8981 1218

*POST* Client Services, ABS, PO Box 10, Belconnen, ACT 2616

*EMAIL* [client.services@abs.gov.au](mailto:client.services@abs.gov.au)



2130710001993  
ISSN 1031-8534

RRP \$16.00